

21c OKLAHOMA CITY

20
20





The New York Times

21c is a transformative 21st century hospitality experience, combining a multi-venue contemporary art museum, genuine hospitality, and a chef-driven restaurant.

Locally rooted, yet globally engaged.



SLEEP WITH ART



Founded by married duo Steve Wilson and Laura Lee Brown, 21c is an innovative hospitality experience.

Brought to life to revitalize the downtown core of their beloved hometown of Louisville, KY, Wilson and Brown merged their loves for contemporary art, farm to table dining and hospitality...and by beautiful accident, a brand was born.

9 and on the move

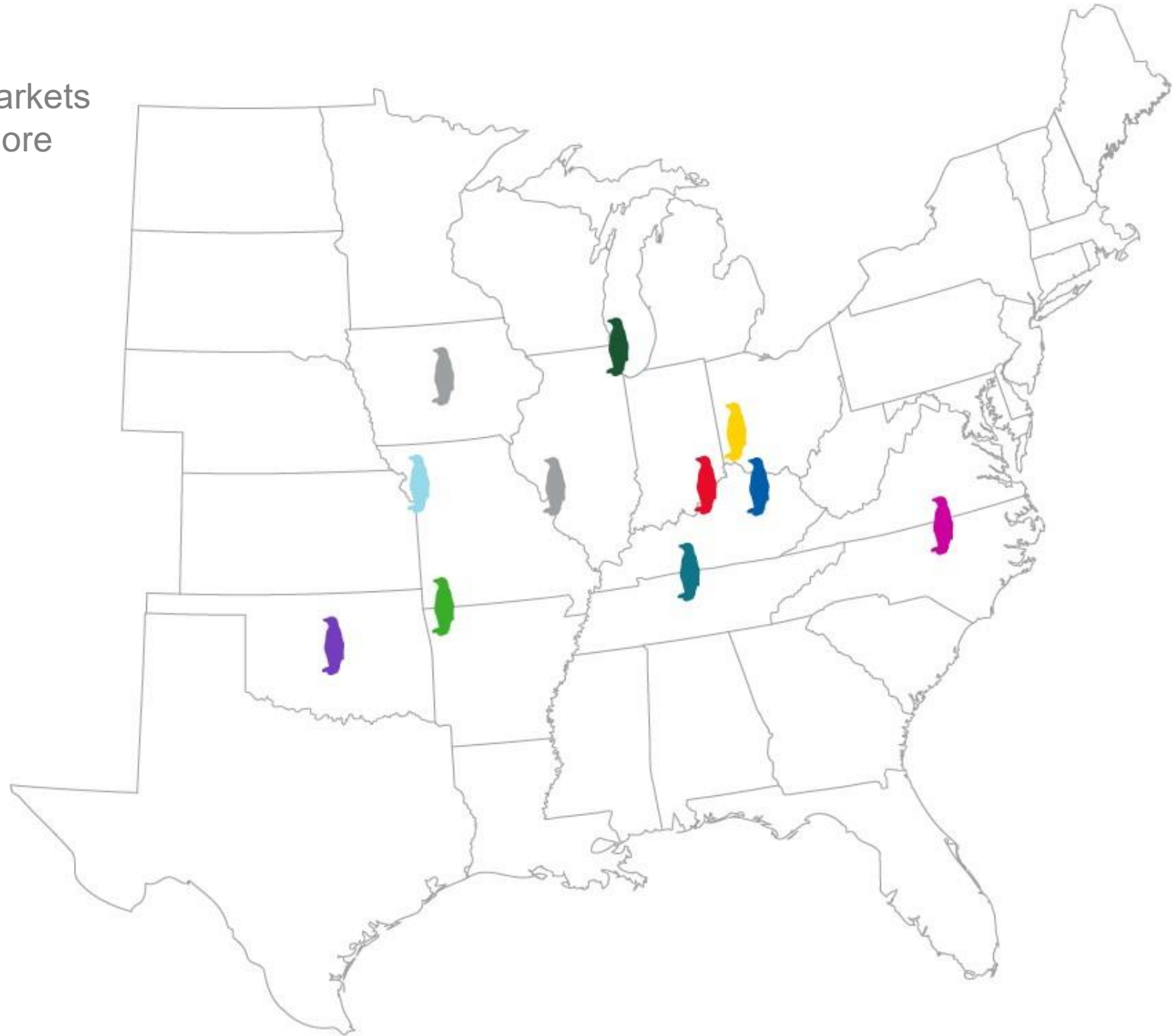
You'll find 21c Museum Hotels in 9 markets across the South and Midwest with more on the way.

Open:

-  21c Louisville (opened 2006)
-  21c Cincinnati (opened 2012)
-  21c Bentonville (opened 2013)
-  21c Durham (opened 2015)
-  21c Lexington (opened 2016)
-  21c Oklahoma City (opened 2016)
-  21c Nashville (opened 2017)
-  21c Kansas City (opened 2018)
-  21c Chicago (opened 2020)

In Development:

- 21c St Louis
- 21c Des Moines



OKLAHOMA CITY





Oklahoma City

The Modern Frontier

Home to the Oklahoma City Thunder, OKC is best known for its cowboy culture and Midwestern charm. An incubator for vibrant arts, music and culinary communities, the city possesses small-town Midwestern charm, big-city amenities (it's Oklahoma's largest!) and a rich heritage. You won't have to venture far from 21c to experience the city's unique flavor.



21C OKLAHOMA
CITY





21c Museum Hotel Oklahoma City Opened June 2016

Originally built in 1916 as a Ford Motor Company assembly plant, 21c Museum Hotel Oklahoma City is a contemporary art museum, a 135-room boutique hotel with spacious guest rooms, a cultural civic center and the home of Mary Eddy's Kitchen x Lounge. 21c brings 14,000 square feet of art-filled exhibition and event space, in-room dining and catering provided by Mary Eddy's, a 24-hour fitness center, business center, and in-house spa.



ALL SAFE PROTOCOLS



MUSEUM





Museum Information ***Exhibitions***

Seeing Now

“We only see what we look at. To look is an act of choice” — John Berger (1926-2017) *Ways of Seeing*

Seeing Now's multi-media selection of artworks explores what and how we see today, revealing the visible and hidden forces shaping what the contemporary world looks like, how we consume and interpret that information, and how visual and psychological perception are evolving in the 21st century. Featured artists interrogate power, both hidden and overt, in the gulf of what is seen and known—between appearance and reality. The global pervasiveness of conflict has engendered the normalization of shock and numb; wanting to look but not to see, we lose sight. As many of these artworks reveal, we are disturbed by violent, unjust, or tragic incidents, yet accustomed to their regularity, and may be blind to their causes and costs, offering a choice: to see and engage with history, or to avoid it.

Always 24/7/365

Free to the Public





Museum Information

Site-Specific Installations

Each 21c location features site-specific works that reflect the global nature of art today. At 21c Oklahoma City, Matthew Gellar's *Woozy Blossom*, a sixteen-foot-high perforated steel tree, produces intermittent mist along Main Street. Inside, James Clar's *River of Time* pays homage to the building's former life as a Ford Motor Assembly Plant with an acrylic conveyor belt in motion like flowing water, while SuttonBeresCuller's *You Always Leave Me Wanting More*, explodes in large red arrows pulsating with a dynamic lighting sequence. For large events, Gunilla Klingberg's *Spinning Wheel of Life*, a cut-out metal and concrete kaleidoscopic pattern embedded across the ballroom floor, offers a uniquely 21c experience.





Museum Information

Cultural Programming

Each location hosts regular cultural programming that is free and open to the public, and 21c collaborates on arts initiatives with artists and organizations locally and world-wide. In 2019, 21c hosted more than 2500 free public events, including performances, classes, lectures and museum tours.

Due to the global Covid-19 pandemic, 21c has pivoted to bring much of this cultural programming to virtual platforms, allowing guests and patrons alike to stay involved.



ROOMS





Deluxe Double Queen

405 - 640 SQ FT

Features two (incredibly comfortable) queen beds and seating area with table, plus all the usual 21c luxury amenities – 43" HDTV, Malin+Goetz bath amenities, free Wi-Fi, Nespresso coffee machine and original artwork on display in the room.

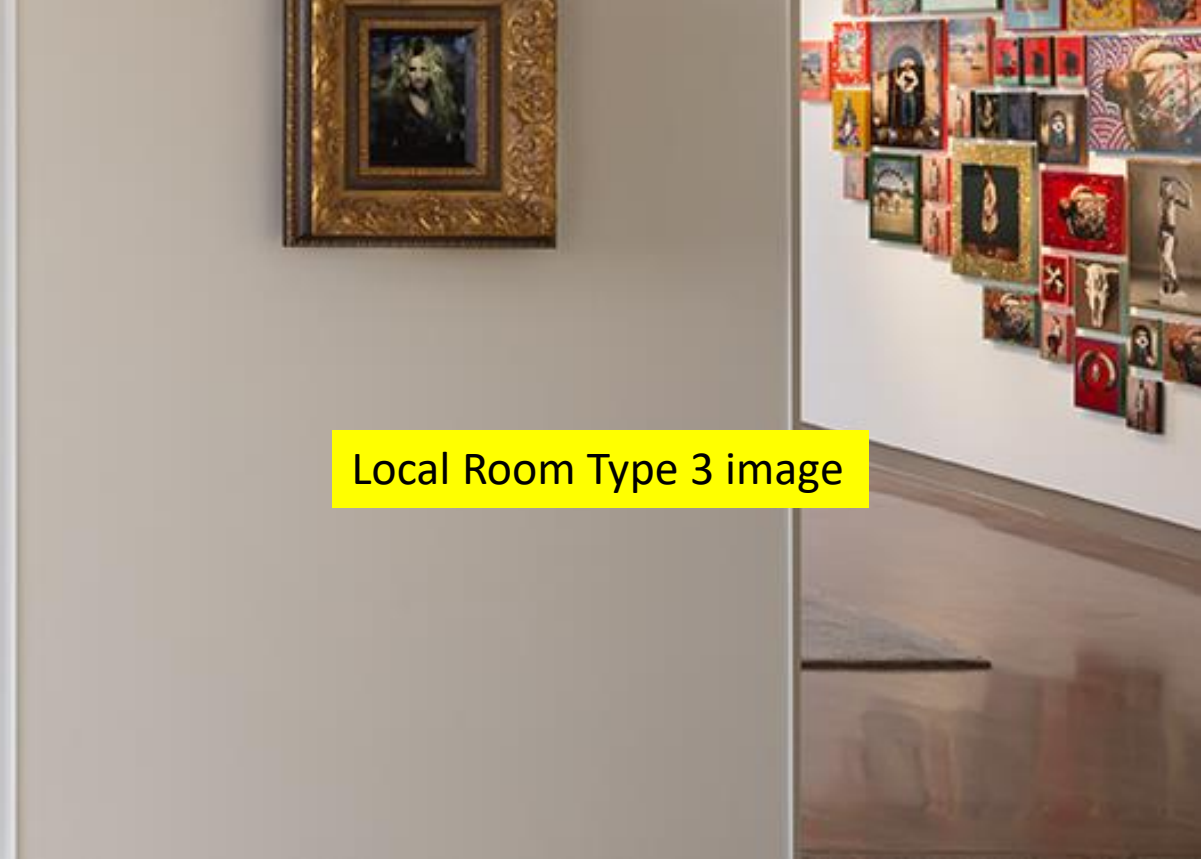


Deluxe King

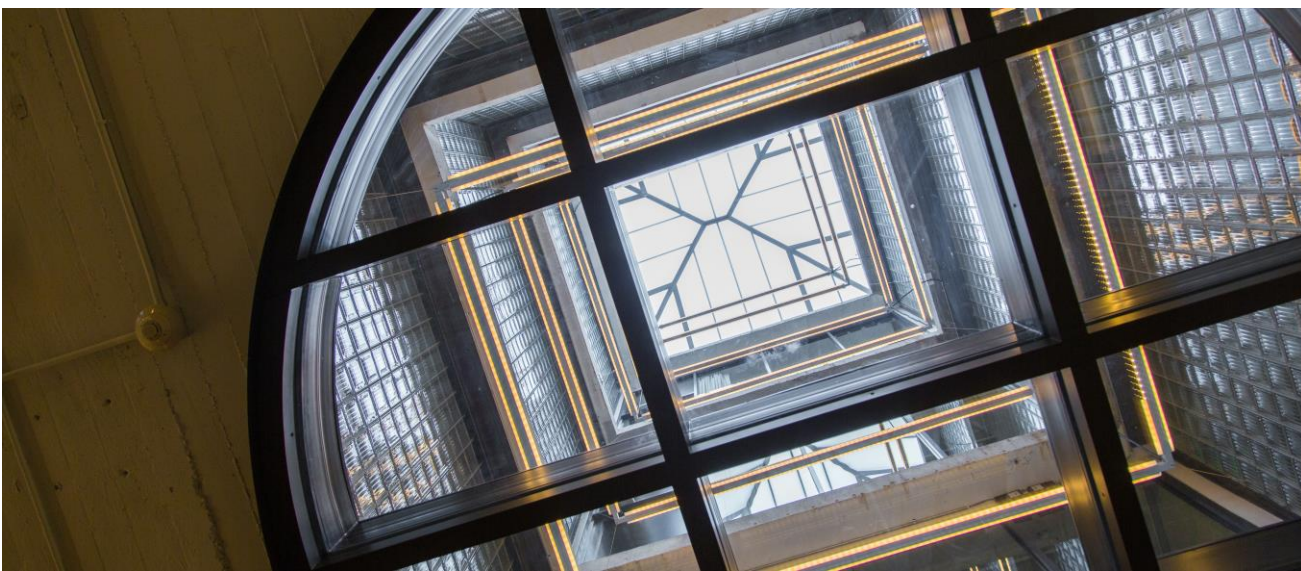
400 SQ FT

King-sized bed (featuring incredibly comfortable and luxurious bedding), seating area with table and standing shower. Includes all the usual 21c amenities – 43" HDTV, Malin+Goetz bath amenities, free Wi-Fi, Nespresso coffee machine and original artwork on display in the room.





Local Room Type 3 image



Lightwell King

435 SQ FT

King-sized bed (of the most comfortable sort) with an exclusive view into a sculptural lightwell that captures sunlight during the day – through a full wall of glass – and features distinctive architectural lighting. Bathroom includes standing shower and Malin+Goetz bath amenities. Plus all the usual 21c amenities – 43" HDTV, free Wi-Fi, Nespresso coffee machine and original artwork on display in the room.



Deluxe Loft Suite

755 – 1,105 SQ FT

One bedroom suite with a king bed, separate living area, dressing table and standing shower. Most feature wet room with soaking tub as well. 49" HDTV in living area and 43" HDTV in bedroom. Plus the usual 21c amenities – Malin+Goetz bath amenities, free Wi-Fi, Nespresso coffee machine and original artwork on display in the room.





Luxury Loft Suite

875 – 1,105 SQ FT

A most comfortable one bedroom suite complete with a king-sized bed, dressing table, separate living area, and wet room with soaking tub and standing shower. Features a 49" HDTV in the living area and 43" HDTV in bedroom. Plus the usual 21c amenities – Malin+Goetz bath amenities, free Wi-Fi, Nespresso coffee machine and original artwork on display in the room.



Lightwell Studio Suite

655-675 SQ FT

One room studio-style suite with (an incredibly comfortable) king-sized bed. Features exclusive view into a sculptural lightwell that captures sunlight during the day – through a full wall of glass – and features distinctive architectural lighting. Includes extra living space, 49" HDTV in living area, 43" HDTV in bed area and standing shower in bathroom. Plus the usual 21c amenities – Malin+Goetz bath amenities, free Wi-Fi, Nespresso coffee machine and original artwork on display in the room.

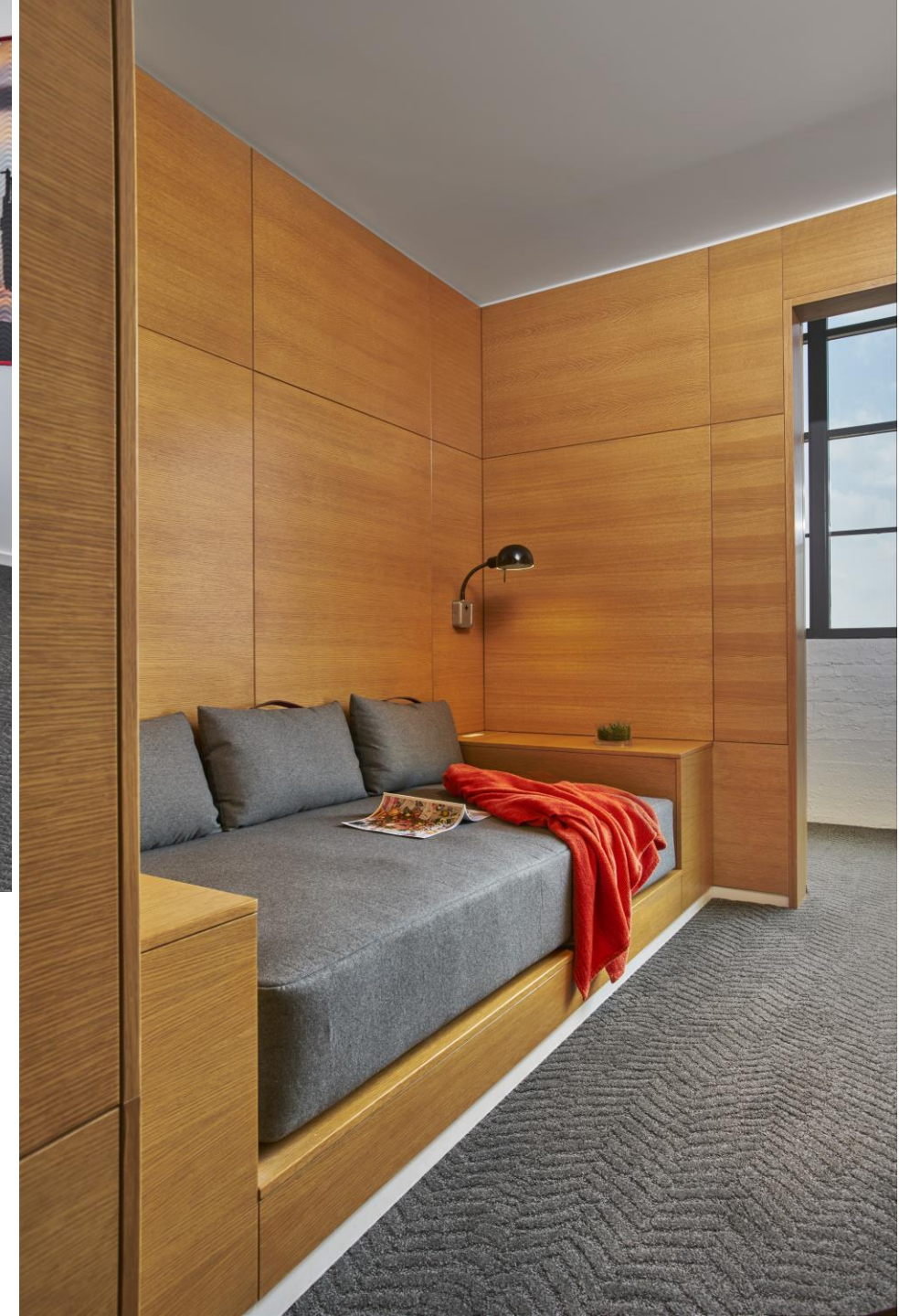




Luxury Loft 1.5 Bedroom

850-920 SQ FT

One bedroom suite with a king bed and extra private space with a daybed. Features separate living area with desk, dressing table, and wet room with soaking tub and standing shower. 49" HDTV in living area and 43" HDTV in bedroom. Plus the usual 21c amenities – Malin+Goetz bath amenities, free Wi-Fi, Nespresso coffee machine, luxurious bedding and original artwork on display in the room.





21c Suite

2,828 SQ FT Interior + 2,220 SQ FT Terrace

Our penthouse-level suite features 2 bedrooms, each with a king bed, and a large terrace that includes outdoor living and dining areas, with sweeping views of downtown OKC. The open concept living and dining area includes a folding glass wall to the terrace. Kitchen includes a full-size refrigerator, ice machine and wine cooler, and the dining table seats 12. Living room includes 2 80" HDTVs and each bedroom includes a 43" HDTV. En suite bathrooms with wet room feature a soaking tub, standing shower with dual showerhead and natural light. Controlled access. Plus the usual 21c amenities –Malin+Goetz bath amenities, free Wi-Fi, Nespresso coffee machine, luxurious bedding and original artwork on display in the room.

MARY EDDY'S





Mary Eddy's Kitchen x Lounge

Located at 21c Museum Hotel Oklahoma City in the former Ford Motor Company Assembly Plant, Mary Eddy's Kitchen x Lounge showcases executive chef Jeff Patton's bold and eclectic take on New American cuisine, in an art-filled, communal setting that honors the building's industrial roots. Menus playfully combine bold, unexpected flavors and celebrate regional, seasonal products.

In addition to the main dining room, a lounge with a large bar, a communal table for 14, and the outdoor "Train Shed" space, Mary Eddy's provides multiple opportunities for large groups to socialize. Looking for something a little more intimate? A private dining room that seats up to 24 with views of the pastry kitchen and restaurant is also available

The building, originally built in 1916 serves as an emblem of industrial innovation in Oklahoma City. One of the plant's first employees, Fred Jones, worked his way up from production line worker to owner, purchasing the building in 1968 and becoming one of the largest Ford dealers in the world. The restaurant is named in honor Fred's wife, Mary Eddy Jones, a passionate traveler, art enthusiast, and humanitarian who strongly believed in giving back to the OKC community. 21c and Mary Eddy's hope to carry on her spirit, celebrating and growing OKC's vibrant culture.



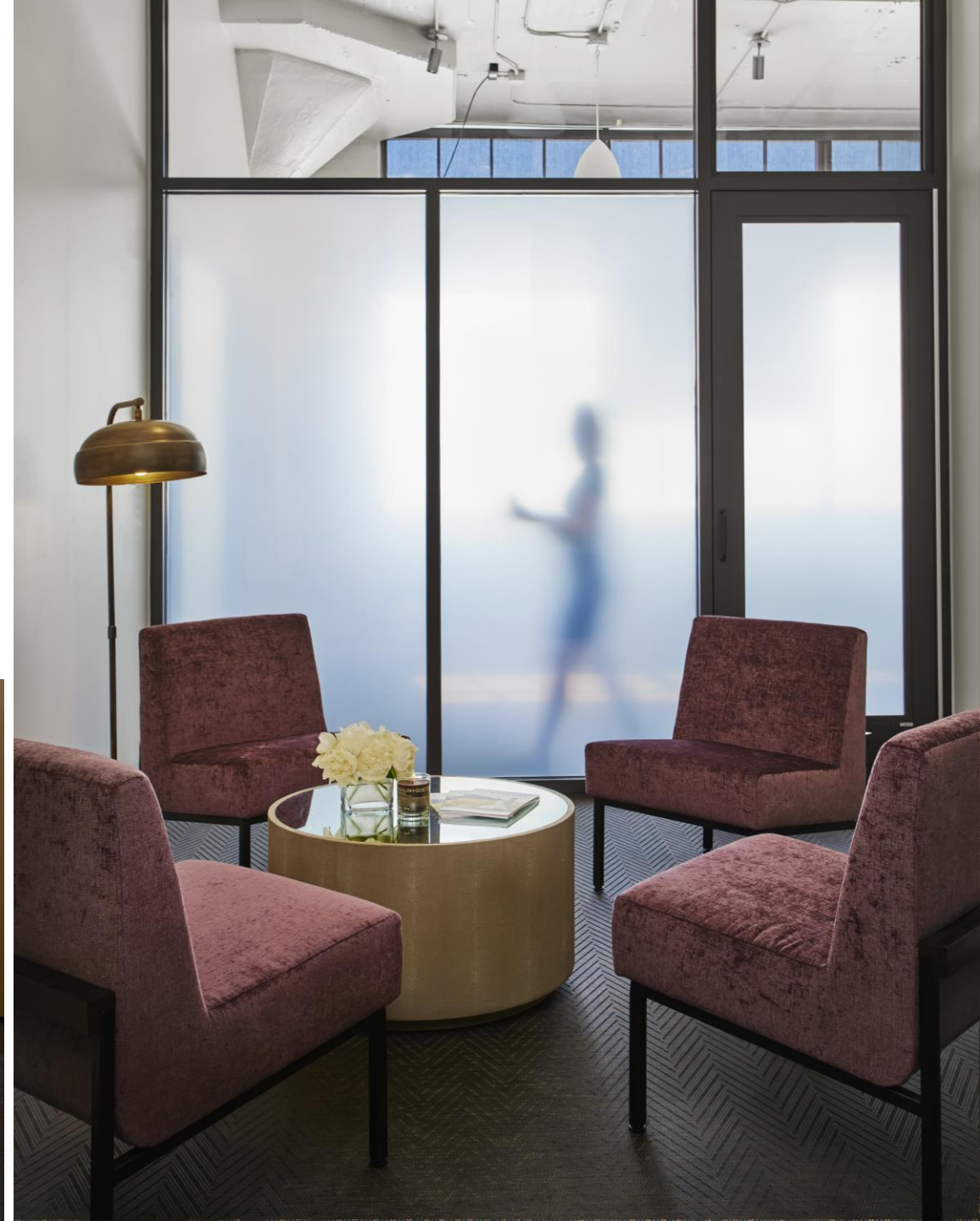
SPA



THE SPA AT 21c

Our massage rooms are conveniently located on the 3rd floor and are adjacent to the sauna, steam room and fitness facility. Alternatively, our therapists are available to treat you in the comfort and privacy of your own guest room, a luxury unavailable at most Oklahoma City day spas. The spa is open seven days a week, 8am – 9pm. All spa treatments are by appointment only and are limited by the availability of personnel.

Available Treatments: Swedish Massage, Deep Tissue Massage, Sports Massage, Prenatal Massage, Custom Massage



WEDDINGS



WEDDINGS AT 21c

Make your big day a unique experience by hosting your reception, rehearsal, or wedding at 21c Oklahoma City. Our Main Gallery seats groups of up to 240 and receptions as large as 350, while our more intimate spaces are perfect for rehearsal dinners and receptions. Mary Eddy's culinary team can prepare a catering menu specifically tailored to your needs.



WEDDINGS AT 21c

For modern brides, seeking a truly unique day, 21c is downtown Oklahoma City's most unique wedding venue. From rehearsal dinners to room blocks, ceremonies to receptions, treat your wedding guests to an artful experience at 21c.

In-House Catering

No boring banquet chicken here. Your guests will rave about Mary Eddy's Kitchen x Lounge catering, which highlights the best in local, seasonal produce.

Dedicated Event Team

However you envision the activities surrounding your big day – lavish wedding ceremony and reception for 240 or an intimate, romantic rehearsal dinner for 20 – our dedicated Event Team will ensure perfection, down to the final detail.

Honeymoon Suite and Room Blocks

Want a wedding night you'll never forget? Retreat to high-style in the 21c Suite. Room blocks are available for out-of-town wedding guests, with special rates available for groups of 10 or more.

Unique Amenities

Treat yourself to a bit of pre-wedding pampering at our in-house spa. Custom welcome gifts can be arranged for your guests or wedding party through the 21c Museum Shop. No reason to rush through your wedding photos – your guests will be occupied exploring the art-filled museum galleries.



MEETINGS + EVENTS





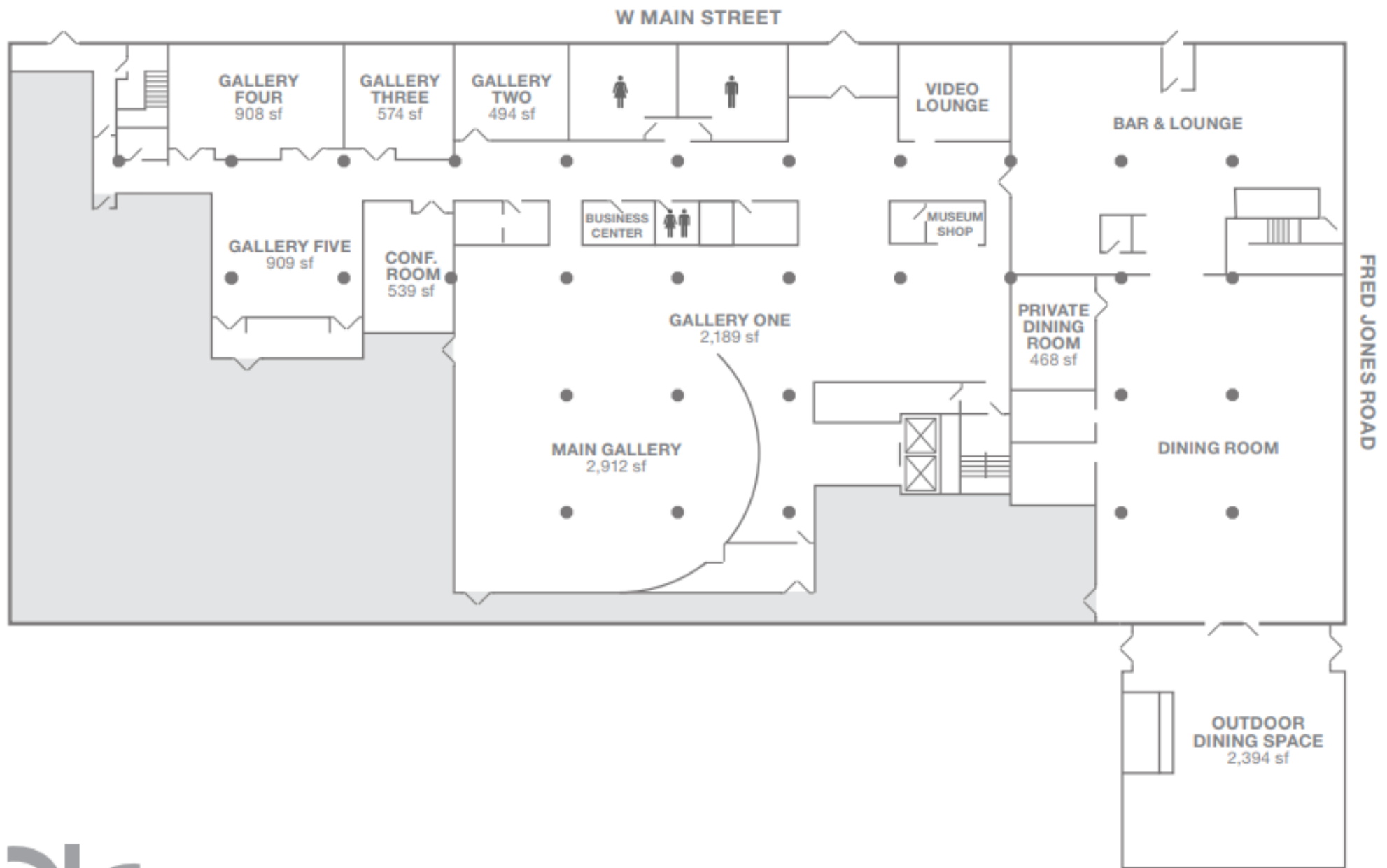
MEETINGS AND EVENTS AT 21c

With over 14,000 square feet of art-filled exhibition and event space, 21c Oklahoma City will feature a wide range of spaces – many with cutting edge audiovisual technology and large light-filled windows. 21c is the perfect venue for board retreats, executive meetings, cocktail gatherings, reception dinners, intimate weddings or any other special occasion. With many flexible spaces available, 21c Museum Hotel Oklahoma City is ready to host private parties of 10-500 people.

Chef Jeff Patton and the culinary team at Mary Eddy's Kitchen x Lounge oversee event catering at 21c. Menus showcase a bold and eclectic take on New American cuisine and playfully combine unexpected flavors while celebrating regional, seasonal products.

Thirsty? A variety of bar packages are available. Have a favorite brew or Bourbon? The team at Mary Eddy's can help you navigate their list of local beers, creative cocktails and aperitifs, Kentucky Bourbons and carefully selected wine offerings.





PROPERTY ACCOLADE S

TOP HOTELS IN THE MIDWEST

– Condé Nast Traveler, Readers' Choice Awards 2017, 2018, 2020

#1 HOTEL IN THE MIDWEST

– Condé Nast Traveler, Readers' Choice Awards 2019

BEST NEW HOTELS IN THE WORLD

– Travel + Leisure, It List 2017

TOP 100 HOTELS IN THE WORLD

– Travel + Leisure, World's Best Awards 2017

TOP 15 CITY HOTELS IN THE CONTINENTAL UNITED STATES

– Travel + Leisure, World's Best Awards 2017



HOTEL CONTACTS

Melanie Briley, Director of Sales
and Marketing
405.982.6910
mbriley@21chotels.com

Alberto Abreu, General Manager
405.982.6905
aabreu@21chotels.com



Mackenzie McDonald, Group
Sales Manager
405.982.6917
mmcdonald@21chotels.com



21C
MUSEUM HOTEL