

21c LOUISVILLE

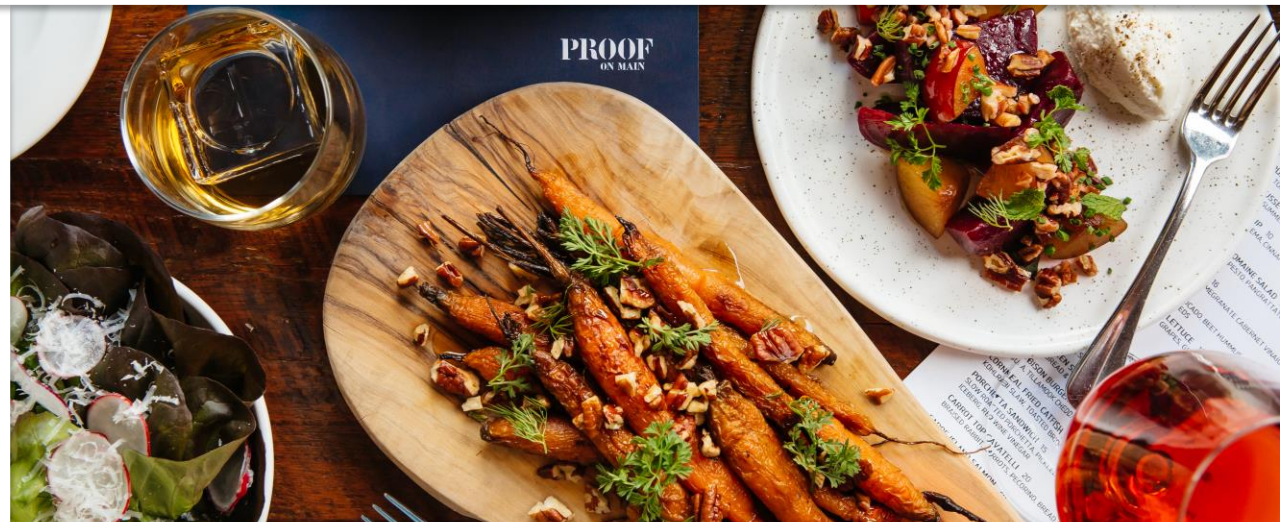




Opened in 2006

Nestled in downtown Louisville on historic West Main Street, along Museum Row, 21c Museum Hotel is a multi-venue contemporary art museum, an award-winning 91-room boutique hotel, and home to acclaimed Proof on Main restaurant. Stay with us and the iconic Red Penguin.

Five 19th-century warehouses live on as more than 9,000 square feet of exhibition space where curated exhibitions and site-specific installations reflect the global nature of contemporary culture. At every turn, 21c Louisville offers something to be curious about.





MUSEUM



Museum Information

Current Exhibition

Wim Botha: Still Life with Discontent

Wim Botha's art is a study in contrasts: his pieces are simultaneously sacred yet profane, heavy yet light, and stable yet unsettled. Through his varying materials and subject matter, Botha explores weighty issues of history, status, power, and religion. A focus on art history is of particular prominence—the artist channels traditional sculptural busts and motifs, though Botha's take on classical or conventional art history is blurred, deconstructed, or fractured. Neither "still" nor "content," Botha's forms and materials are dynamic, marked, and in motion. Repetitively interrogating the symbols and sources of religious, cultural, and political power, his works celebrate the anxiety of influence while resisting fixed interpretation.

Always 24/7/365
Free to the Public



Wim Botha, *Still Life with Water*, 2015. Wood, bronze, oil paint, glass, fluorescent lights.



Museum Information

Current Exhibition

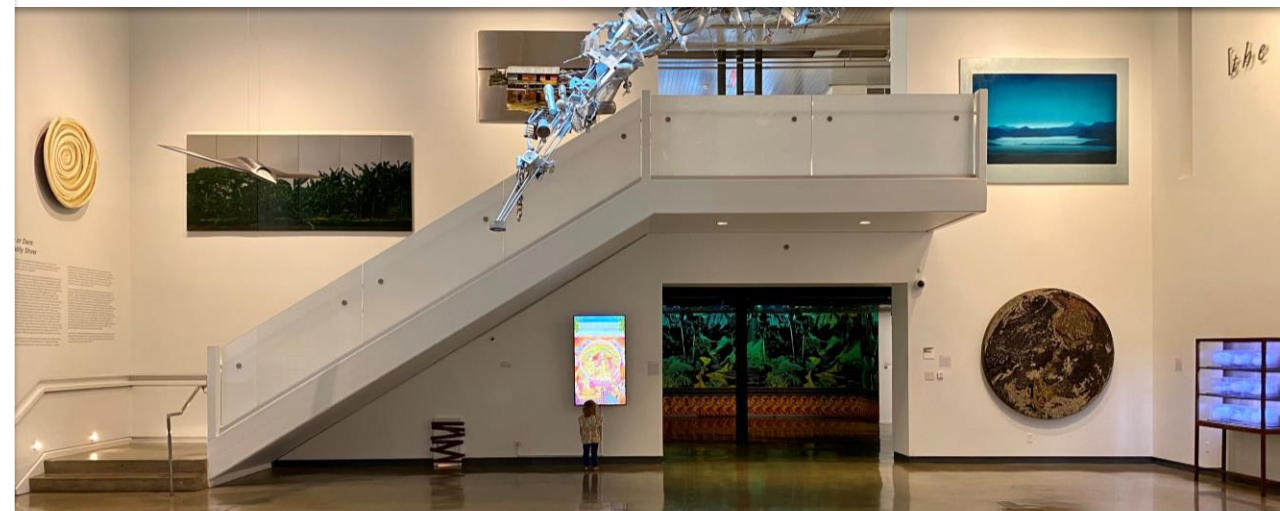
Truth or Dare: Reality Show

Highlighting uncertainty and contradiction, the artworks featured in *Truth or Dare: A Reality Show* emphasize the importance of questioning both knowledge and belief by utilizing illusion to entice, entertain, and explore the terrain between fact and fiction, presence and absence, reality and imagination. The suspension of disbelief is invoked in works that simulate games, maps, and tricks of the eye and hand—not to deceive, but to engage and connect, offering playful and prescient critiques of how and where we search for knowledge, meaning, or value. Facing continuing global strife, political instability, and economic disparity, the artists included in *Truth or Dare* speak truth to power through unconventional, often playful juxtapositions of imagery and materials.

Always 24/7/365
Free to the Public

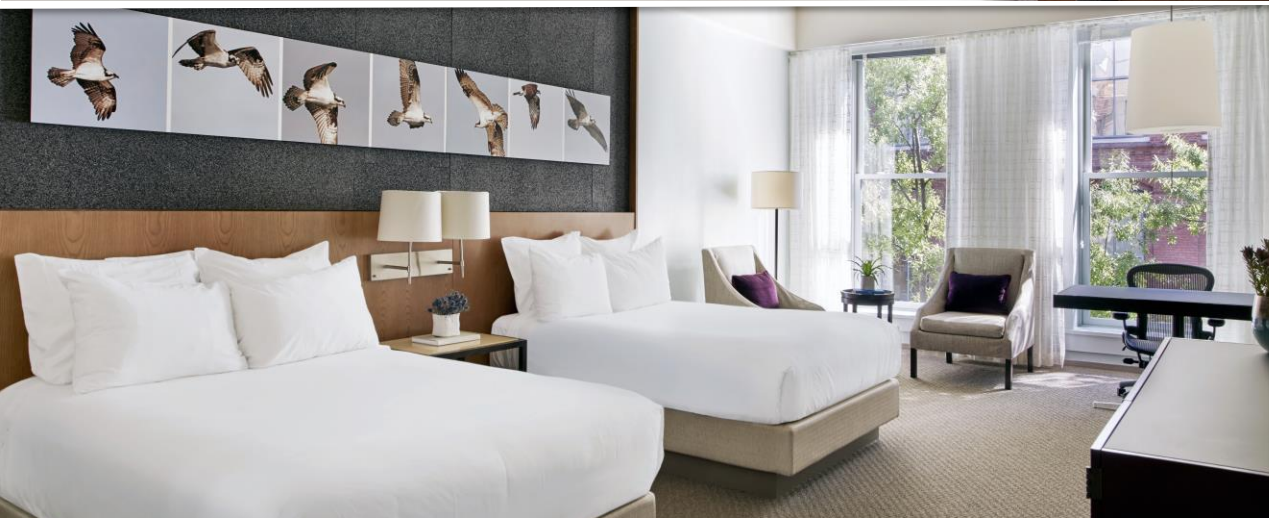


Gavin Nolan, *A Warrior Jungle Whiner*, 2017.



ROOMS





Deluxe & Luxury Double

350-455 sq ft

Features two (incredibly comfortable) double beds. Includes a view of the atrium and all the usual 21c luxury amenities – 42" HDTV, Malin+Goetz bath amenities, free Wi-Fi, and original artwork on display in the room.



Deluxe & Luxury King

335-435 sq ft

King-sized bed (of the most comfortable sort) with a view of the city and all the usual 21c amenities – 42" HDTV, Malin+Goetz bath amenities, free Wi-Fi, and original artwork on display in the room.





Atrium Suite

580 sq ft

A most comfortable king-sized bed and living and dining areas with a view of the atrium. The bathroom features double vanity sinks and a second walk-in shower. Outfitted with the usual 21c amenities – 42" HDTV, Malin+Goetz bath amenities, free Wi-Fi, and original artwork on display in the room.

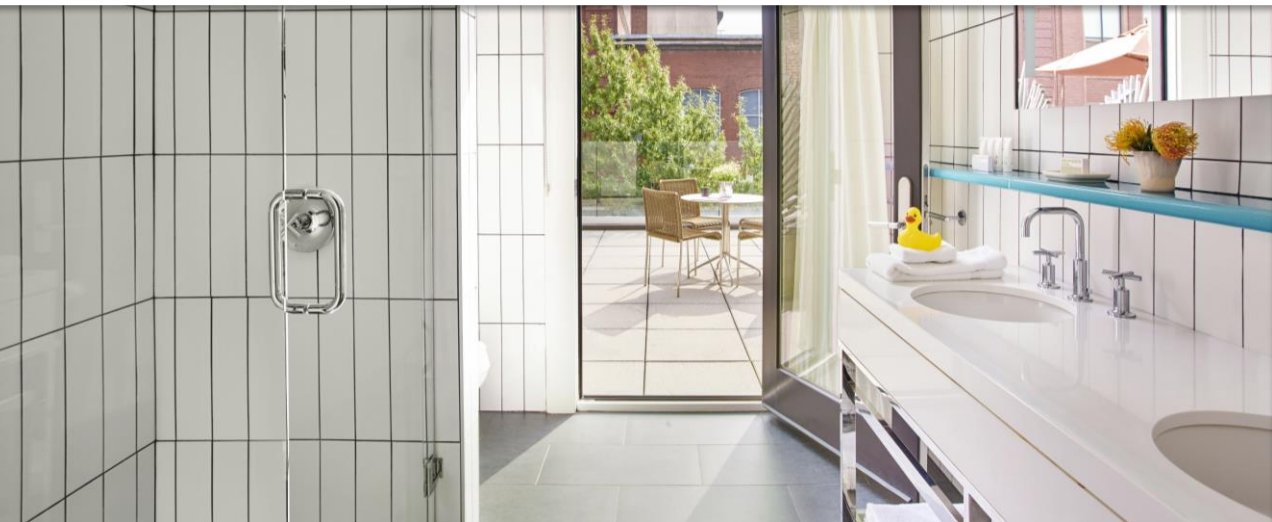




Corner Suite

660-1095 sq ft (with connecting King)
Our largest room, features (an incredibly comfortable) king-sized bed along with living and dining areas. Four large windows provide gorgeous views of 7th Street, Main Street and the Ohio River. Outfitted with the usual 21c amenities – 42" HDTV, Malin+Goetz bath amenities, free wifi, and original artwork on display in the room.

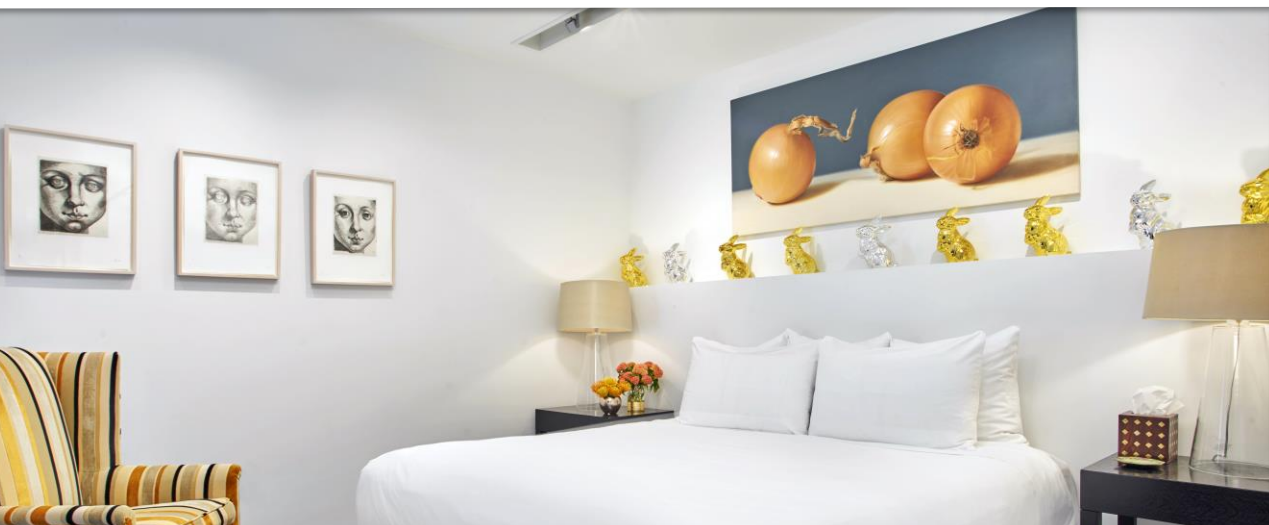




Balcony

315 sq ft + 306 sq ft terrace

King-sized bed and outdoor terrace with city views. Suite includes furnished, semi-private rooftop terrace overlooking historic 7th Street. Amenities include 42" HDTV, Malin+Goetz bath amenities, free wifi, luxurious bedding, and original artwork on display in the room.



Rooftop Apartment

1314 sq ft + 2197 sq ft Garden Terrace

Spacious one bedroom apartment with expansive rooftop garden terrace and open concept living/dining area. Features large private rooftop terrace with sweeping downtown and river views. Satellite radio throughout, full gourmet kitchen, 1 full bath + 2 half baths, and luxurious amenities.

RESTAURANT





PROOF ON MAIN

Led by Kentucky-native Executive Chef Jonathan Searle, Proof on Main's menu showcases a unique, modern approach to comfortable, accessible and locally-sourced cuisine.

With a commitment to regional farmers and producers, Proof on Main's ever-evolving menus are infused with local flavor and showcase the bounty of the Ohio River Valley. The restaurant's unique relationship with Woodland Farm allows diners to eat locally-raised heritage meats and to sample the season's best ingredients. Complementing the culinary artistry, Proof on Main features rotating contemporary art exhibitions.

With a carefully selected spirits collection – that reflects a dedication to quality, diversity and originality – our bartenders are always ready to shake it up. Our spirit collection emphasizes small batch, artisanal craftsmanship from around the world. Given our proximity to Bourbon Country, it is naturally highlighted by an impressive selection of 120+ of Kentucky's finest Bourbons, some bottled exclusively for Proof on Main as part of our 21c Selects private, single barrel program.

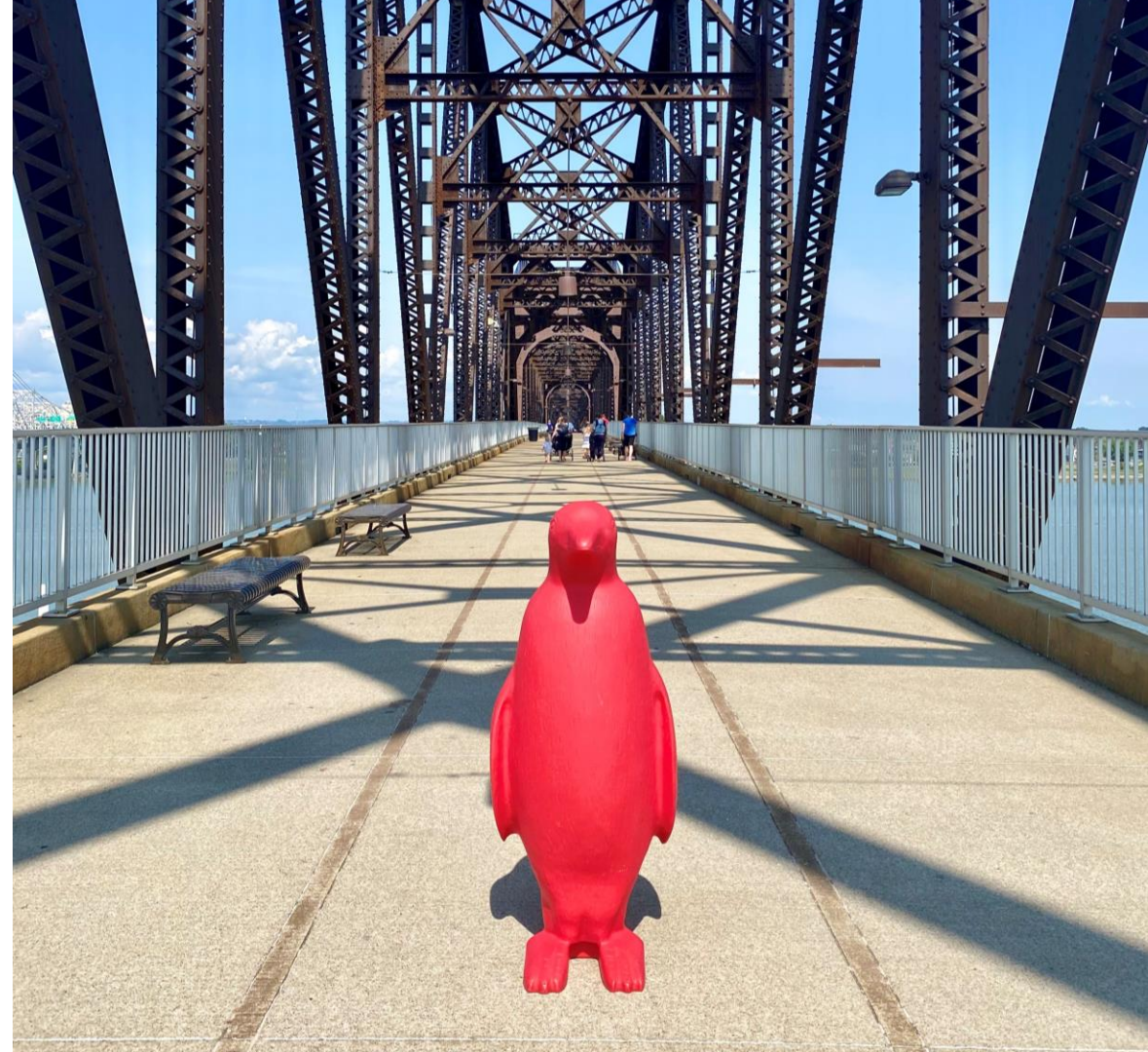


HOTEL CONTACTS

Mary Molter, Director of Sales and Marketing
502.599.9756
mmolter@21chotels.com

William Mulloy, Senior Sales Manager
502.217.6310
wmulloy@21chotels.com

Mary Burks, Event Sales Manager
502.217.6374
mburks@21chotels.com



CONNECT ON SOCIAL

 @21clouisville // @proofonmain

 21c Louisville // Proof on Main

A row of eight colorful penguin figurines stands on a white window ledge. From left to right, the colors are light blue, dark blue, purple, magenta, royal blue, green, yellow, and red. The penguins are stylized and appear to be made of a smooth material. They are positioned in front of a white brick wall with large, multi-paned windows. A white metal railing is visible in the foreground, partially obscuring the lower part of the penguins. The scene is brightly lit, suggesting a sunny day.

21c